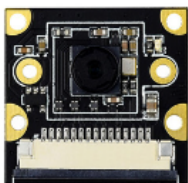


Resberry PI IMX219 Camera Specifications

Model	Sensor	With IR Lights	FOV / Aperture / Focal Length	Monocular / Binocular	Upper Board System	
RPi Camera V2	IMX219 (8MP)	Yes	62.2° / 2.0 / 3.04	Monocular	Raspberry Pi, CM3/3+14, Jetson Nano, Jetson; Xavier NX	
RPi NoIR Camera V2		No	62.2° / 2.0 / 3.04	Monocular	Raspberry Pi, CM3/3+14, Jetson Nano	
IMX219-77 Camera		Yes	79.3° / 2.0 / 2.85	Monocular	CM3/3+14, Jetson Nano, Jetson; Xavier NX	
IMX219-77IR Camera		No	79.3° / 2.0 / 2.85	Monocular		
IMX219-120 Camera		Yes	120° / 2.0 / 1.79	Monocular		
IMX219-160 Camera		Yes	160° / 2.35 / 3.15	Monocular		
IMX219-160IR Camera		No	160° / 2.35 / 3.15	Monocular		
IMX219-170 Camera		Yes	170° / 2.4 / 2.2	Monocular		
IMX219-200 Camera		Yes	200° / 2.0 / 0.87	Monocular		
IMX219-160 IR-CUT Camera		Yes	160° / 2.7 / 1.75	Monocular		
IMX219-83 Stereo Camera		Yes	83° / 2.4 / 2.6	Binocular		CM3/3+/4, Jetson; Nano (B01), Jetson Xavier NX

IMX219-77 Camera

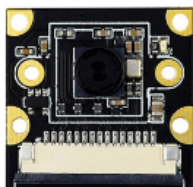
摄像头



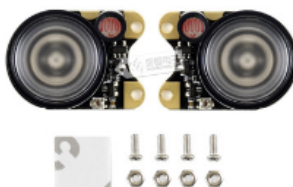
FFC线15PIN (异向)

IMX219-77IR Camera

摄像头



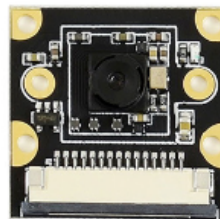
LED红外灯



FFC线15PIN (异向)

IMX219-120 Camera

摄像头



FFC线15PIN (异向)

IMX219-160 Camera

摄像头



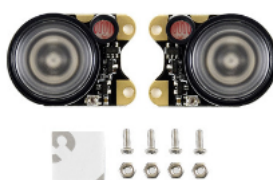
FFC线15PIN (异向)

IMX219-160IR Camera

摄像头



LED红外灯



FFC线15PIN (异向)

IMX219-170 Camera

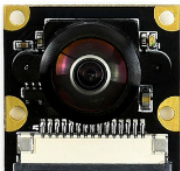
摄像头



FFC线15PIN (异向)

IMX219-200 Camera

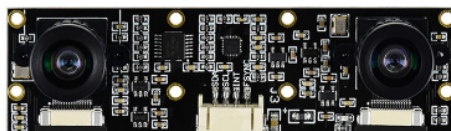
摄像头



FFC线15PIN (异向)

IMX219-83 Stereo Camera

双目摄像头



FFC线15PIN

FFC线15PIN转22PIN

PH2.0 4PIN排线

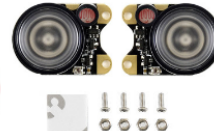


IMX219-160 IR-CUT Camera

摄像头



LED红外灯



FFC线15PIN (异向)

