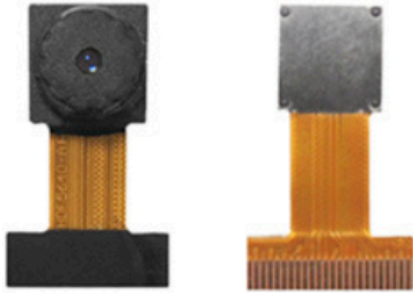


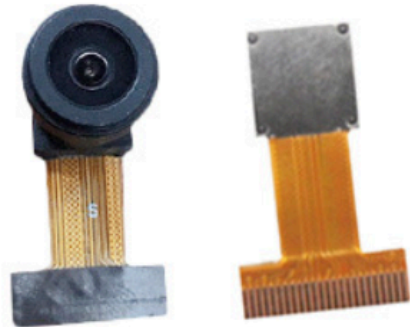
# Technical Specifications

Model	OV2640 Camera Module
Pixel	2MP 1600x1200
Sensor	OV2640(1/4")CMOS
FOV (Focus Length)	Customizable
Output Format	YUY2 /YUV/JPEG /MJPEG
Frame Rate	UXGA/SXGA:15fps SVGA:30 fps CIF :60 fps
Application Areas	Notebook/Tablet/Advertising Machine; Smart Home; Visual Intercom; Facial Recognition Drone; Motion Camera; Security Monitoring; Driving Recorder/Police Enforcement Device.
Interface	DVP
Size	Customizable(PCB/FPC)



**HDF3M-811-V1.0(9X9-110°)**

L\*W\*H:21\*12.5\*5.8mm



**HDF3M-811-V1.0 (9X9-大镜头)**

L\*W:21\*12.5mm (镜头可选)



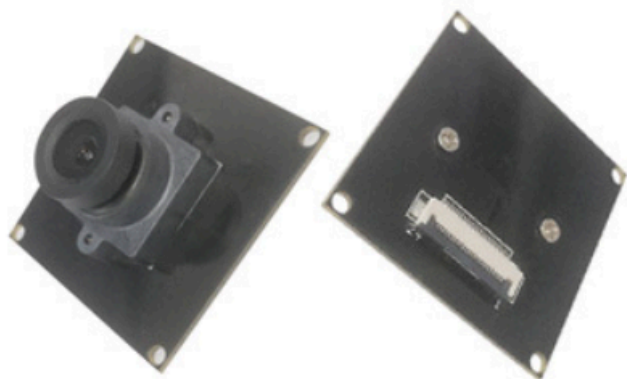
**JL8219D(9x9)**

L\*W:40\*12.5mm



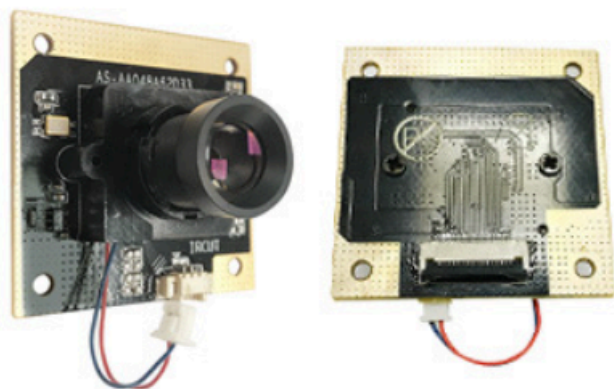
**AS-DA048A62D47-90(8X8 68°)**

L\*W\*H:90\*8\*5.5mm



**HDF2640-GZ-V1.0-1**

L\*W:38\*38mm(镜头可选)



**AS-AA048A62D33(带IR-CUT)**

L\*W:38\*38mm(镜头可选)